

# 104-110 Greene St

Located in The Heart of Soho Between Spring and Prince

# Sido

NEW YORK REAL ESTATE



## SIZE

1465 RSF

## RATE

Upon Request

## TERM

June 2022

## AVAILABILITY

Immediate

## NOTES

- The Soho Building
- Class A Building
- Roofdeck for Tenants
- Conference Room
- Furnished Suite
- Move-In Ready
- Wet Pantry
- Windows All-Around
- (2) Bathrooms
- (2) Private Offices
- Bullpen Area

For Surrounding Area and Location Please Call Sido at **212-706-9079**

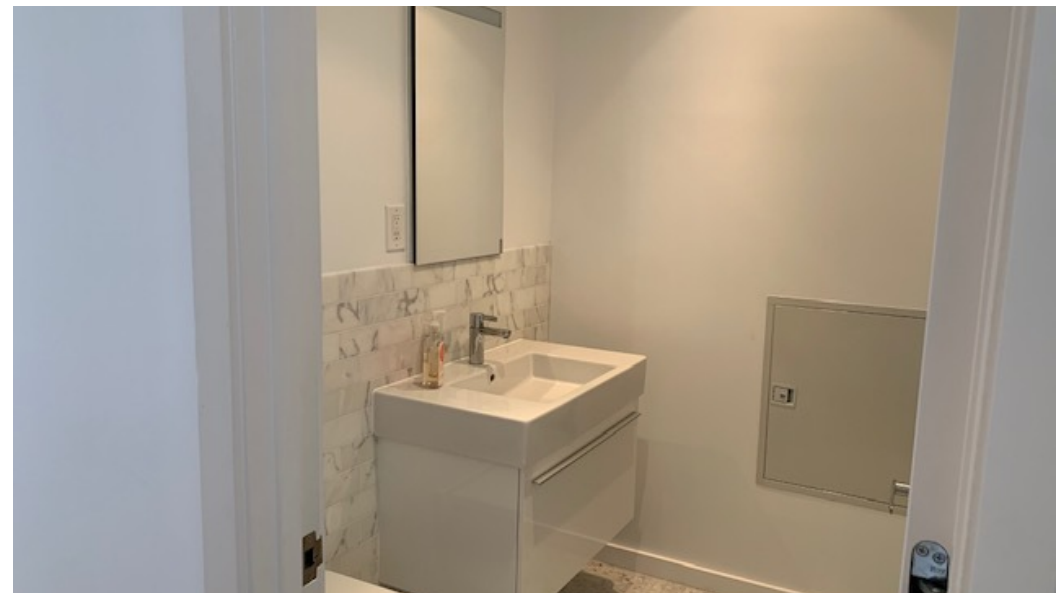
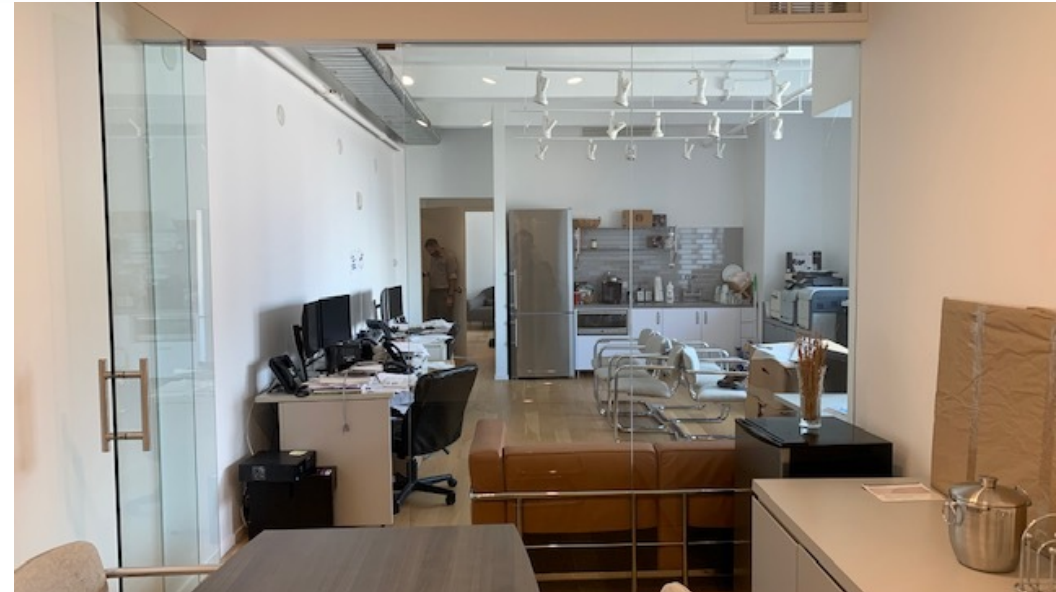
147 W 35th Street, #402  
New York, NY 10001  
[www.sidonyre.com](http://www.sidonyre.com)

# 104-110 Greene St

Located in The Heart of Soho Between Spring and Prince

# Sido

NEW YORK REAL ESTATE



147 W 35th Street, #402  
New York, NY 10001  
[www.sidonyre.com](http://www.sidonyre.com)

# 104-110 Greene St

Located in The Heart of Soho Between Spring and Prince

# Sido

NEW YORK REAL ESTATE



## NOTES

- The Soho Building includes some of the most priceless art to be displayed in it's lobby
- Showing by Appointment Only
- Sublease on 10th Floor
- Direct Extension Possible
- For more information, please call Sido Direct at **212-706-9079**